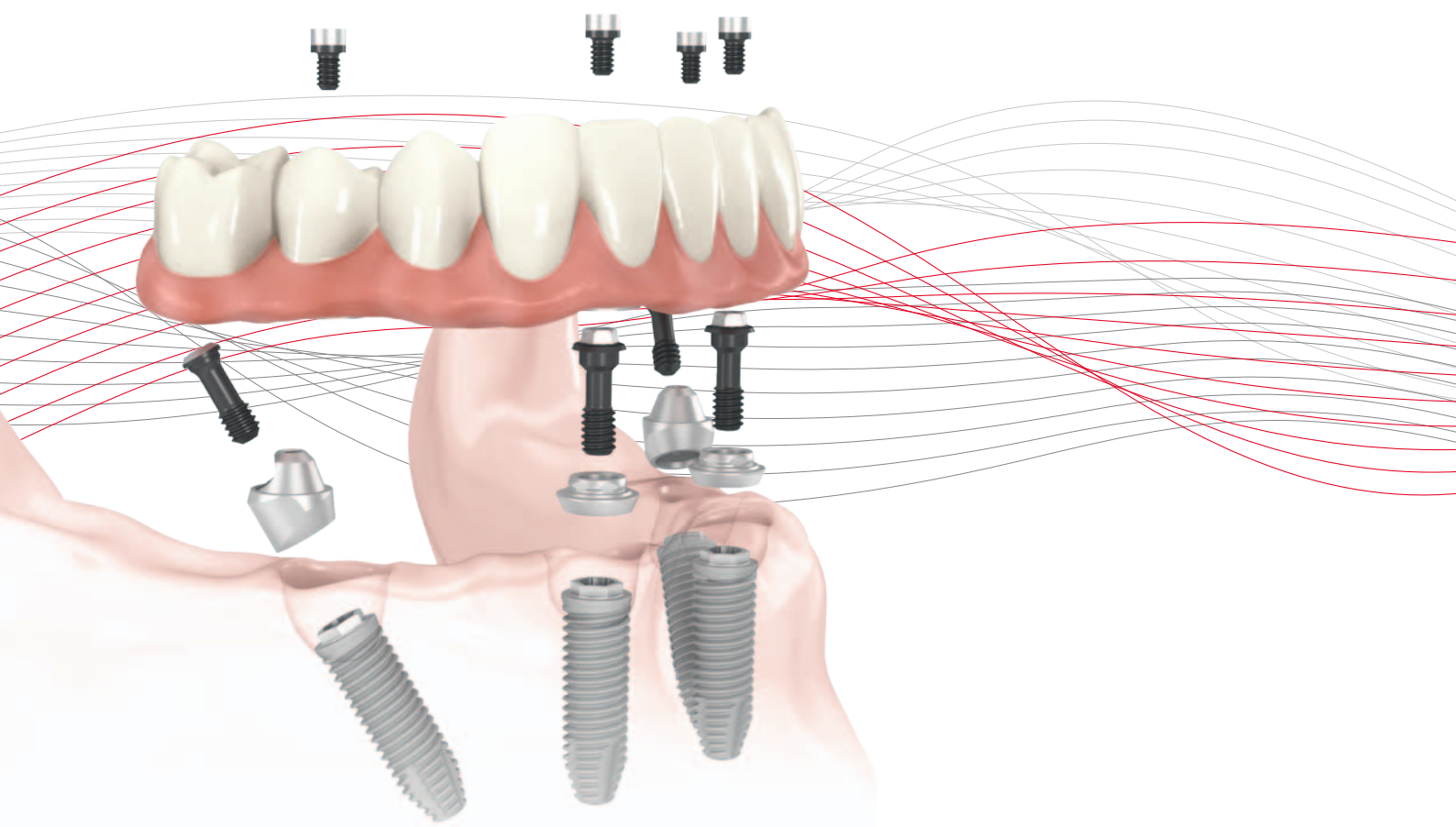


Best in class

The efficient and predictable
All-on-4® treatment concept

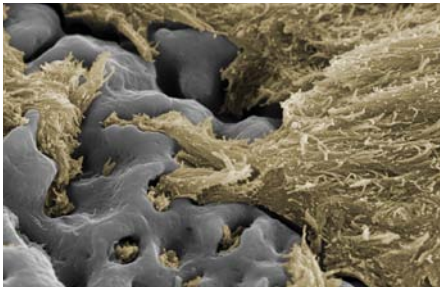


Three elements for immediate patient satisfaction

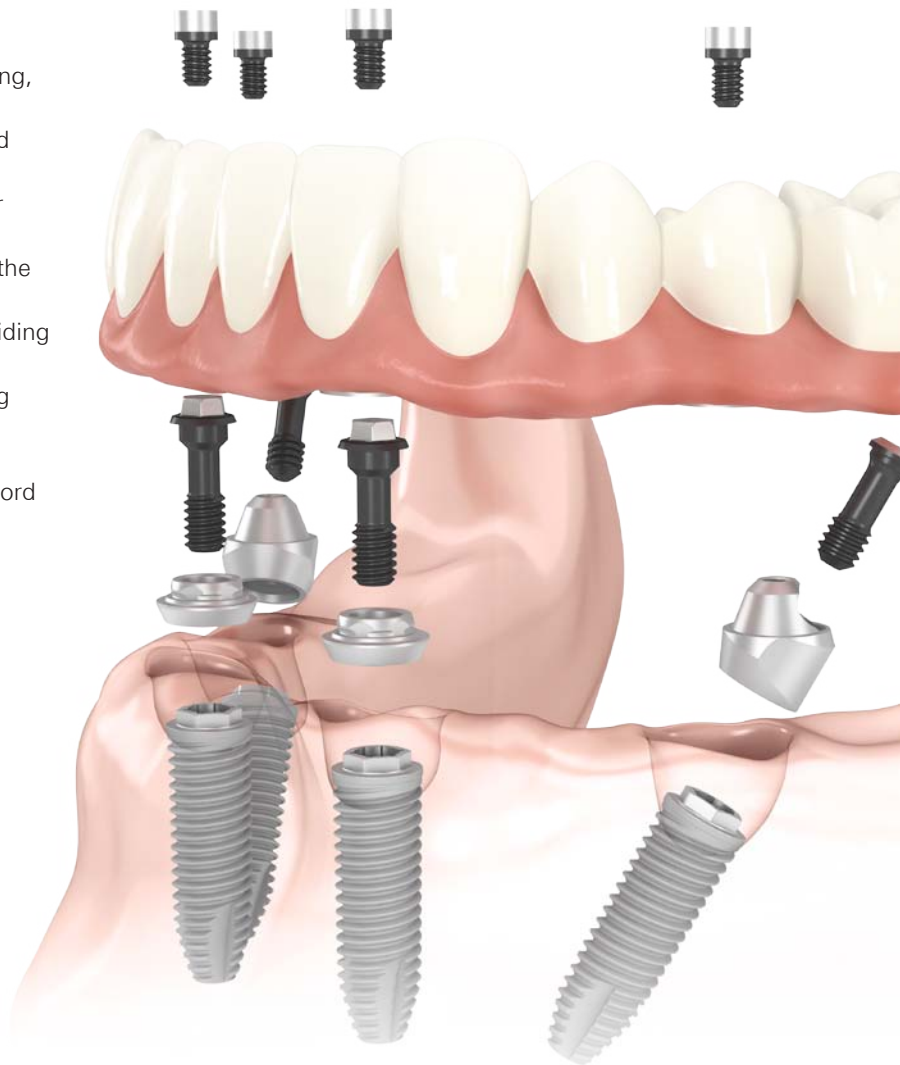
The All-on-4® treatment concept is the best in its class of solutions. But only when Nobel Biocare products are combined. Many have tried to mirror this ground-breaking concept, but only Nobel Biocare has the scientifically documented success to back it up. Nobel Biocare and the All-on-4® treatment concept – the proven formula for success.

Why choose the All-on-4® treatment concept?

- ✓ Offers your patients immediate improvement in eating, comfort, esthetics and speech.^{1,2}
- ✓ Shorter treatment time and reduced costs compared with conventional implant treatment modalities.³
- ✓ Favorable bone levels and soft tissue parameters for tilted and axial implants.^{4,5}
- ✓ High survival rates with up to 10 years follow-up in the mandible and 5 years in the maxilla.^{6,7}
- ✓ Maximizes anterior-posterior (AP) spread, while avoiding important anatomical structures.
- ✓ Helps avoid complex grafting procedures, increasing the likelihood of patient acceptance.
- ✓ High stability with just four implants.⁸
- ✓ Your satisfied patients help grow your practice by word of mouth.



TiUnite supports predictable and enhanced osseointegration. The unique combination of controlled titanium oxide texture and porosity makes bone grow directly onto and into the surface, starting in the grooves on the threads.
© Schüpbach Ltd, Switzerland



1 Achieve Immediate Function

Immediate patient satisfaction

Thanks to their design and dedicated drilling protocols, Nobel Biocare implants achieve a high initial stability, which is maintained during osseointegration by the TiUnite surface and patented grooves. All our implants can therefore be loaded with a provisional restoration on the day of surgery.

2 Select Nobel Biocare Multi-unit Abutments

Get a handle on perfect positioning

The Multi-unit Abutment is delivered with a patented, pre-mounted holder for superior handling. This doubles as a guide for checking abutment angulation.

It also supports during guided surgery with NobelGuide by becoming part of the jig when repositioning the abutment from the model into the patient's mouth.



Choose the original Multi-unit Abutment

Nobel Biocare has been producing Multi-unit Abutments since 2000.

Ideal for small spaces

Short cone for limited interocclusal space.

Secure passive fit

Wide shoulder for easy positioning of the prosthetic restoration.

For all tissue anatomies

Both straight and angled variants are available in nine different collar heights.



3 Provide optimal esthetics

Add a CAD/CAM restoration

Enjoy easy handling and long-term predictability with the precision fit of a NobelProcera restoration. The unrivaled product quality allows the All-on-4® treatment concept to deliver patient satisfaction.¹



NobelProcera Implant Bridge Titanium



NobelProcera Implant Bridge Zirconia

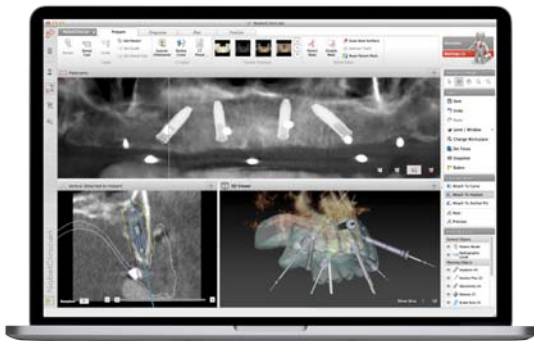


NobelProcera Hybrid Bar



NobelProcera Implant Bar Overdenture

Take predictability to the next level



Prosthetic-driven planning. And much more.

Diagnose, plan, collaborate with your team and order all the surgical components you need in one place with the NobelClinician Software.



Make your plan a reality

Benefit from predictable implant placement with a custom-designed, ready-to-use surgical template you can rely on.

Learn from the pioneers

To develop the knowledge and skills needed to achieve the best possible All-on-4® treatment results, you need to learn from the best.

Nobel Biocare offers a range of dedicated All-on-4® courses covering everything from the fundamentals to advanced zygomatic procedures.

Courses are held by renowned clinicians at locations all over the world.

Sign up today:

nobelbiocare.com/courses



References: **1.** Weinstein R, Agliardi E, Fabbro MD, Romeo D, Francetti L. Immediate rehabilitation of the extremely atrophic mandible with fixed full-prosthesis supported by four implants. Clin Implant Dent Relat Res 2012;14:434-41. **2.** Mozzati M, Arata V, Gallesio G, Mussano F, Carossa S. Immediate Postextractive Dental Implant Placement with Immediate Loading on Four Implants for Mandibular-Full-Arch Rehabilitation: A Retrospective Analysis. Clin Implant Dent Relat Res 2013;15:332-40. **3.** Babbush CA, Kanawati A, Kotsakis GA, Hinrichs JE. Patient-Related and Financial Outcomes Analysis of Conventional Full-Arch Rehabilitation Versus the All-on-4 Concept: A Cohort Study. Implant Dent 2014;23:218-24. **4.** Pomares C. A retrospective study of edentulous patients rehabilitated according to the 'All-on-four' or the 'All-on-six' immediate function concept using flapless computer-guided implant surgery. Eur J Oral Implantol 2010; 3:155-63. **5.** Francetti L, Romeo D, Corbella S, Taschieri S, Del Fabbro M. Bone Level Changes Around Axial and Tilted Implants in Full-Arch Fixed Immediate Restorations. Interim Results of a Prospective Study. Clin Implant Dent Relat Res 2012;14:646-54. **6.** Malo P, de Araujo Nobre M, Lopes A, Moss SM, Molina GJ. A longitudinal study of the survival of All-on-4 implants in the mandible with up to 10 years of follow-up. J Am Dent Assoc 2011;142:310-20. **7.** Malo P, de Araujo Nobre M, Lopes A, Francischone C, Rigolizzo M. "All-on-4" Immediate-Function Concept for Completely Edentulous Maxillae: A Clinical Report on the Medium (3 Years) and Long-Term (5 Years) Outcomes. Clin Implant Dent Relat Res 2012;14 Suppl 1:e139-50. **8.** Patient centered management and optimal number of implants in the treatment of edentulism – A consensus conference. Eur J Oral Implantol 7 (2014), No. 2 (24.06.2014)